

W868-FLY

868 MHz 1/4 Wave
Whip Antenna

Features

- ◆ Moulded Whip Antenna
- ◆ External Mount
- ◆ Comes with Flying Lead
- ◆ Ideal for ISM-Band applications

Specifications

Frequency	868 MHz
Polarisation	Linear
Return Loss	- 14 dB
Bandwidth	10% @ centre frequency
Power Rating	50W
Cable / Connector	215mm Flying Lead
Dimensions	92x14.5mm

Ordering Options

W868-FLY	W868-FLY with 215mm Flying Lead
----------	---------------------------------

Specifications subject to change without notice.

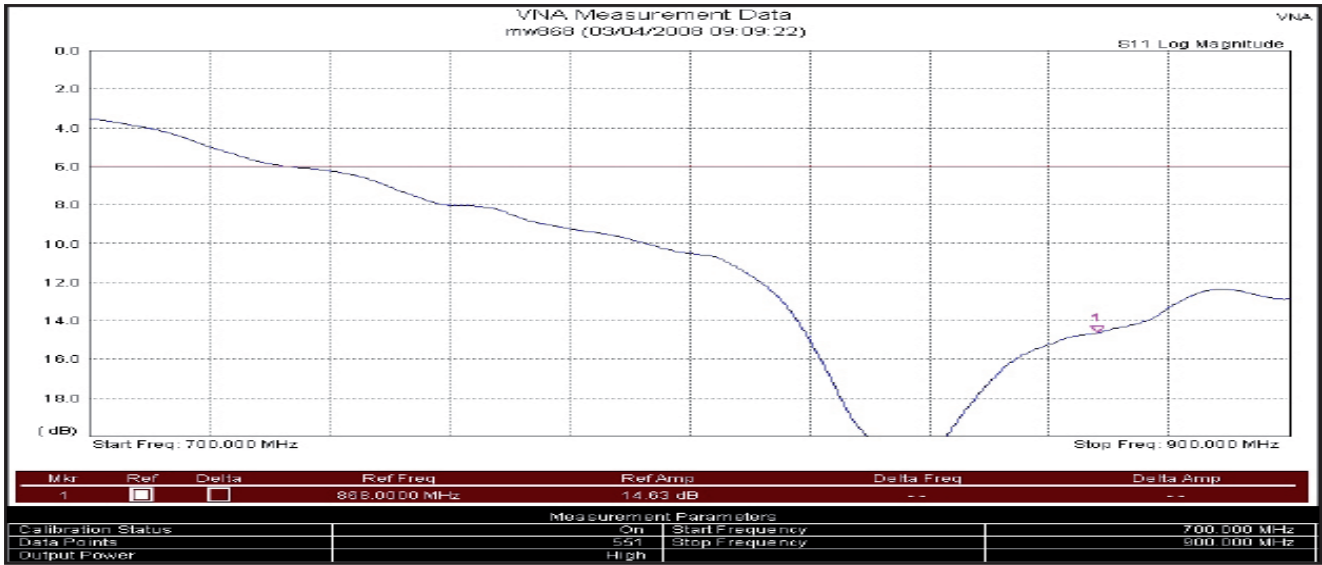
5 Little Balmer
Buckingham Industrial Park
Buckingham
MK18 1TF
UK

Tel: +44 (0)1280 824055
Fax: +44 (0)1280 817179
Email: sales@ead-ltd.com
Web: www.ead-ltd.com

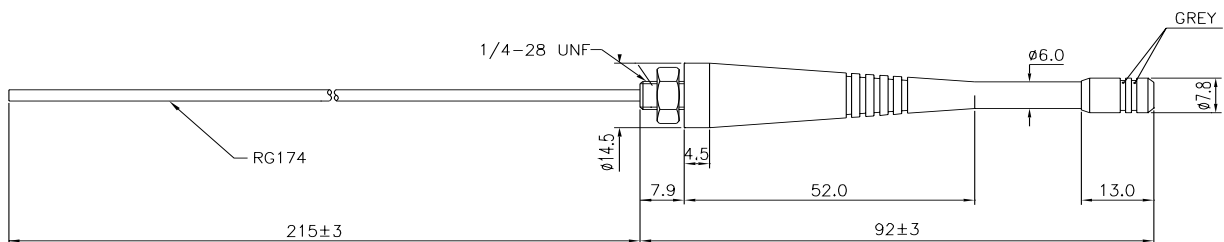


W868-FLY | 868 MHz 1/4 Wave Whip Antenna

Return Loss



Outline Drawing



Specifications subject to change without notice.

5 Little Balmer
Buckingham Industrial Park
Buckingham
MK18 1TF
UK

Tel: +44 (0)1280 824055
Fax: +44 (0)1280 817179
Email: sales@ead-ltd.com
Web: www.ead-ltd.com